

# PROTECTIVE ACCESS ENCLOSURES

## EXTERNAL DISCONNECT ENCLOSURE

Catalog No.	Height	Width	Depth	Industry Standard	Product Code
<a href="#">SCE-EXD18</a>	34.50	15.00	18.00	IS4	P2
<a href="#">SCE-EXD18SS</a>	34.50	15.00	18.00	IS6	P2
<a href="#">SCE-EXD12</a>	34.50	15.00	12.00	IS4	P2

For use with flange-mount disconnect enclosures. Ref. SCE-84XM4018 or similar.



### Application

Designed for use with enclosures that require additional protection against Arc Flash. This enclosure can be used with an environmentally rated enclosure to isolate the main power supply. Increasing personal protection by preventing incidental contact or exposure to the high voltage arc flash and shock hazard, and potentially reducing the PPE level for the lower risk components of the main enclosure. The External Disconnect Enclosure bolts to the exterior right side of a single or multi door primary enclosure. Aids in achieving compliance with NFPA 70E by concealing main power supply. For installation information, consult our installation manual at [www.saginawcontrol.com](http://www.saginawcontrol.com).

### Construction

- 0.075" carbon steel/type 304 stainless steel.
- Seams continuously welded and ground smooth.
- Flange trough collar around all sides of door opening.
- Pour in place oil and water resistant gasket.
- Black quarter turn latch.
- Collar studs provided for mounting panels.
- 31"H x 12"W galvanized subpanel installed.
- Concealed hinges.
- Latches are opened or closed with a screwdriver.
- Mounting hardware included.
- Mechanical interlock and mounting hardware included.

### Finish

ANSI-61 gray powder coated inside and out. SS:#4 brushed finish on all exterior surfaces.

### IS4 Industry Standards

NEMA Type 3R, 4, 12 & Type 13  
UL Listed Type 3R, 4 & 12  
CSA Type 3R, 4 & 12  
IEC 60529 IP66

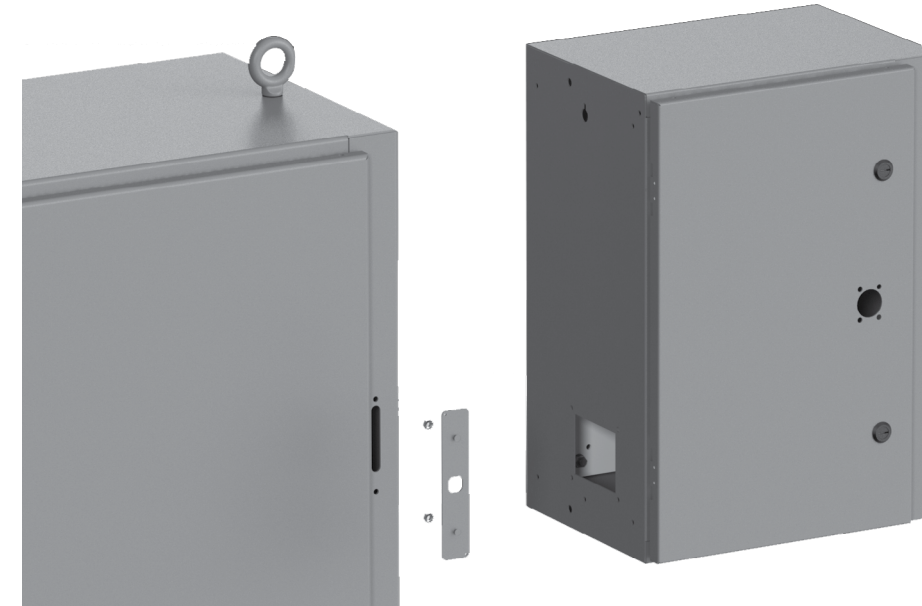
### IS6 Industry Standards

NEMA Type 3R, 4, 4X, 12 & Type 13  
UL Listed Type 3R, 4, 4X & 12  
CSA Type 3R, 4, 4X & 12  
IEC 60529 IP66

# PROTECTIVE ACCESS ENCLOSURES

## EXTERNAL DISCONNECT ENCLOSURE ROTARY

Catalog No.	Height	Width	Depth	Industry Standard	Product Code
<a href="#">SCE-EXR12-30T200</a>	24.00	17.00	12.00	IS4	P2
<a href="#">SCE-EXR18-400</a>	48.00	17.00	18.00	IS4	P2



Note: Main door is mechanically interlocked to the External Disconnect such that the main enclosure door must be closed and door handle engaged in order to turn disconnect on.

Once the main enclosure is closed and disconnect is turned on, the main enclosure is automatically locked when disconnect is turned on, and unlocked when disconnect is turned off.

A defeater mechanism on the flange of the main enclosure allows entry with power on by deliberate means.

### Application

Designed for use with enclosures that require additional protection against Arc Flash. This enclosure can be used with an environmentally rated enclosure to isolate the main power supply. It increases personal protection by preventing incidental contact or exposure to the high voltage arc flash and shock hazard, and potentially reduces the PPE level for the lower risk components of the main enclosure. This External Disconnect Enclosure is designed specifically to accommodate the Rotary Compact Fusible disconnect Allen-Bradley 194R, Square D GS2, Eaton/Bussmann R9, Siemens CFS and Scocomec Fuserbloc Models. Aids in achieving compliance with NFPA 70E by concealing main power supply. For more information consult our installation manual at [www.saginawcontrol.com](http://www.saginawcontrol.com).

### Construction

- 0.075" steel
- Seams continuously welded and ground smooth.
- Flange trough collar around all sides of door opening.
- Pour in place oil & water resistant gasket
- Collar studs provided for mounting panels.
- Galvanized subpanel installed.
- Concealed hinges.
- Black quarter turn latches.
- Latches are opened or closed with a screwdriver.
- Mounting hardware included.
- Cable Operated Mechanical interlock and hardware included.
- Provisions for Rotary Compact Fusible disconnect
- For use with flange mount disconnect enclosures

### IS4 Industry Standards

NEMA Type 3R, 4, 12 & Type 13  
UL Listed Type 3R, 4 & 12  
CSA Type 3R, 4 & 12  
IEC 60529 IP66